

# Fastening systems for robots







System holder NW 48/52





Combi clip/half shell NW 52  
60603012  
black  
Material: PA

System holder NW 48/52  
60903030  
black  
Material: PA



Combi clip/half shell NW 48 60603011  
black  
Material: PA

The system holder is the core element of a modular hose holding system. The system holder is compatible with other common NW 48 and 52 articulated pieces and half shells from various manufacturers.

The system holder can be used in automation technology and robotics technology. For dynamic application with high dress pack mobility at the fastening point as well as for rigid application with securely installed cables and hoses, with or without strain relief. The whole system offers the highest possible performance with regard to stability and durability.

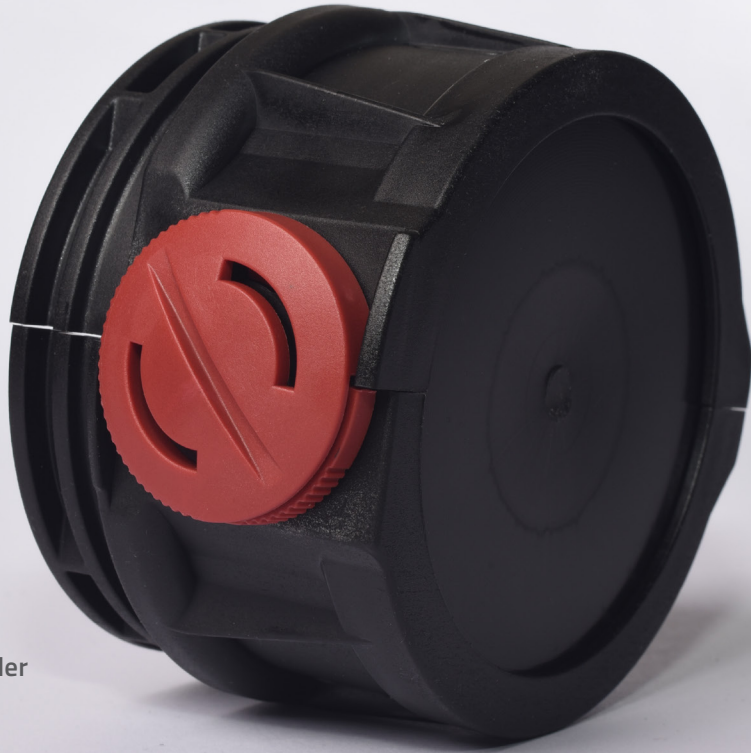




The background image is a composite of two industrial scenes. The upper portion shows a robotic arm with a gripper, set against a blue-tinted background. The lower portion shows a welding process with bright orange sparks flying from a point of contact. A semi-transparent red banner with white text is overlaid across the middle of the image.

# Strain relief NW 70 holder and blank





Strain relief holder  
60901631  
black  
Material: PA

Strain relief blank  
60901400  
black  
Material: PA

#### **Strain relief holder:**

The strain relief holder NW 70 can be combined with other common holders.

**Special feature:** The turn lock can be installed without tools.

#### **Strain relief blank:**

The strain relief blank NW 70 is compatible with other common NW 70 strain relief holders from various manufacturers.







**System holder NW 70**  
**Combi clip NW 70**





System holder NW 70  
60903013  
black  
Material: PA



Combi clip NW 70  
60603008  
black  
Material: PA

The system holder NW 70 is the core element of a modular hose holding system. The system holder is compatible with other common NW 70 articulated pieces and half shells from various manufacturers. The system holder can be used in automation technology and robotics technology. For dynamic application with high dress pack mobility at the fastening point as well as for rigid application with securely installed cables and hoses, with or without strain relief. The whole system offers the highest possible performance with regard to stability and durability.







**Ball joint NW 70**





Ball joint  
60601700  
black  
Material: PA

The ball joint is compatible with other common NW 70 system holders from various manufacturers and all common types of NW 70 corrugated tubing.

**Special feature:**

The ball joint has a particularly large angle of rotation up to 26°

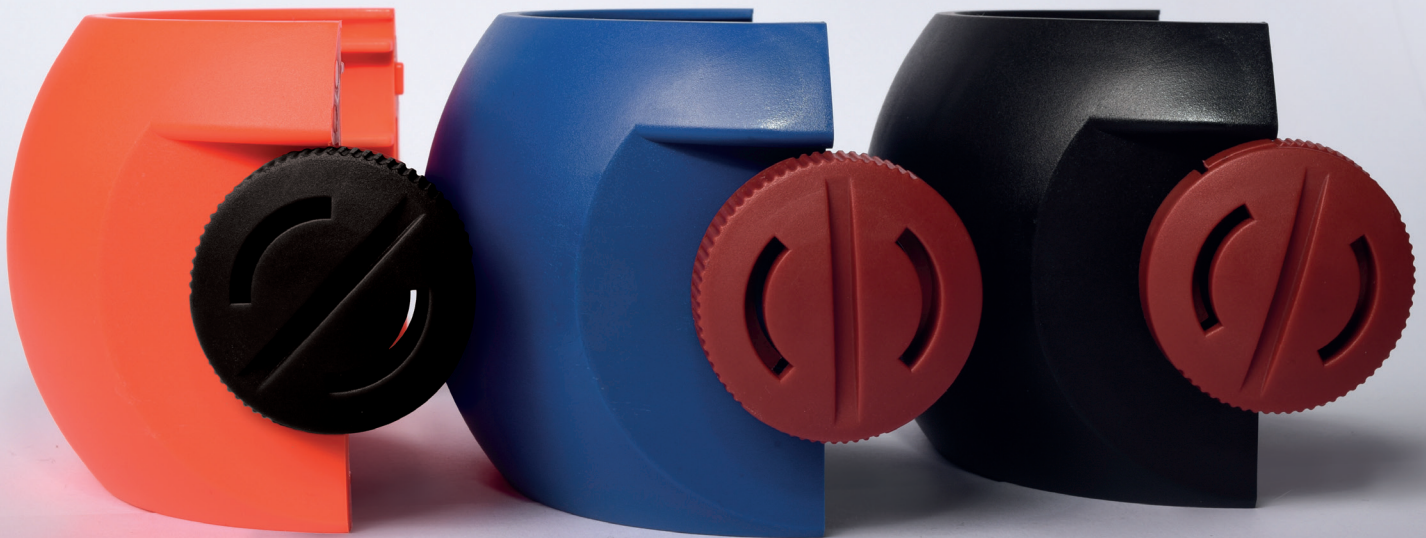






# Protector NW 70





Protector  
60601269  
red  
Material: PA

Protector  
60601270  
blue  
Material: PA

Protector  
60601268  
black  
Material: PA

The protector NW 70 fits on all common types of corrugated tubing in size NW 70 which are used in the automotive industry.

**Special feature:**

Repair protector – the protector can be used to repair two NW 70 corrugated tubes from different manufacturers.





**Robotic Solutions GmbH**

Carl-Friedrich-Gauß-Str. 7  
47475 Kamp-Lintfort  
Tel.: +49 2842 21946-0  
Fax: +49 2842 21946-99  
[www.robotic-solutions.de](http://www.robotic-solutions.de)  
[info@robotic-solutions.de](mailto:info@robotic-solutions.de)

**robotic<sup>®</sup>**  
**solutions**

# Fastening systems for robots

**Robotic Solutions GmbH**, based in Kamp-Lintfort, is active in the automotive and supplier industry.

Our service portfolio for robotics engineering includes everything from the initial consultation to implementation. We construct, plan and manufacture energy conduit systems and fastening elements for all types of robots and applications according to the individual requests of our customers. Our customers receive robot cables in bulk or pre-assembled. Our employees are happy to help you with the optimization of your system.

Robotic Solutions GmbH is your expert for robotics. Well-thought-out support components give

robots the necessary mobility for high operating speeds and precise repeat accuracy over a long life time. Materials specially developed for robotics as well as the unique geometry of our products guarantee first-class results.

Universal fastening elements for all common robots can be combined with individual constructions. These give the hydraulic and electrical components of the dress pack the necessary support. The specially-developed cable sheaths for complex robotics applications can withstand extreme strains and movements. Specially modified materials and the unique hose geometry guarantee the best protection and durability.